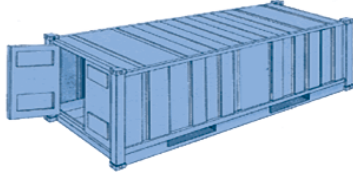


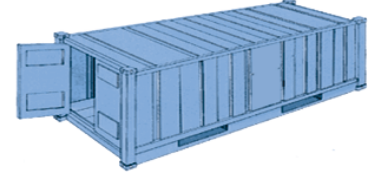


SEA FREIGHT DIMENSIONS



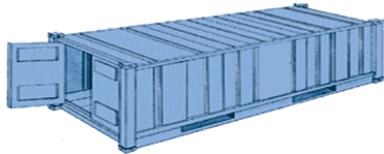
STANDARD CONTAINER

SPEC	LENGTH*	WIDTH*	HEIGHT*	DOOR WIDTH	DOOR HEIGHT	CAPACITY	TARE WEIGHT	MAXI CARGO
Standard 20'	19' 4"	7' 8"	7' 10"	7' 8"	7' 6"	1,172 Cft	4,916 Lbs	47,900 Lbs
	5.900 m	2.350 m	2.393 m	2.342 m	2.280 m	33.2 m ³	2,230 Kgs	21,770 Kgs
Standard 40'	39' 5"	7' 8"	7' 10"	7' 8"	7' 6"	2,390 Cft	8,160 Lbs	59,040 Lbs
	12.036 m	2.350 m	2.392 m	2.340 m	2.280 m	67.7 m ³	3,700 Kgs	26,780 Kgs



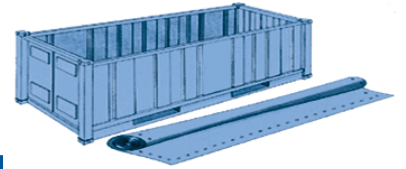
UPGRADED CONTAINER

SPEC	LENGTH*	WIDTH*	HEIGHT*	DOOR WIDTH	DOOR HEIGHT	CAPACITY	TARE WEIGHT	MAXI CARGO
Upgraded 20'	19' 4"	7' 7"	7' 10"	7' 6"	7' 6"	1,150 Cft	5,060 Lbs	61,996 Lbs
	5.900 m	2.311 m	2.390 m	2.286 m	2.280 m	32.63 m ³	2,300 Kgs	28,180 Kgs
High Cube	39' 5"	7' 8"	8' 10"	7' 8"	8' 5"	2,694 Cft	8,750 Lbs	58,450 Lbs
	12.036 m	2.350 m	2.697 m	2.338 m	2.585 m	76.3 m ³	3,970 Kgs	26,510 Kgs



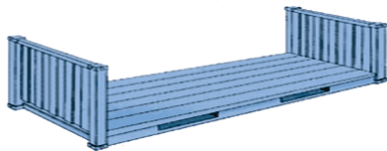
REEFERS CONTAINER

SPEC	LENGTH*	WIDTH*	HEIGHT*	DOOR WIDTH	DOOR HEIGHT	CAPACITY	TARE WEIGHT	MAXI CARGO
Reefer 20'	17' 8"	7' 5"	7' 5"	7' 5"	7' 3"	1,000 Cft	7,040 Lbs	45,760 Lbs
	5.425 m	2.275 m	2.260 m	2.258 m	2.216 m	28.3 Cu.m	3,200 Kgs	20,800 Kgs
Reefer 40'	37' 8"	7' 5"	7' 2"	7' 5"	7' 0"	2,040 Cft	10,780 Lbs	56,276 Lbs
	11.493 m	2.270 m	2.197 m	2.282 m	2.155 m	57.8 Cu.m	4,900 Kgs	25,580 Kgs
Reefer 40' High Cube	37' 11"	7' 6"	8' 2"	7' 6"	8' 0"	2,344 Cft	9,900 Lbs	57,561 Lbs
	11.557 m	2.294 m	2.500 m	2.294 m	2.440 m	66.6 Cu.m	4,500 Kgs	25,980 Kgs



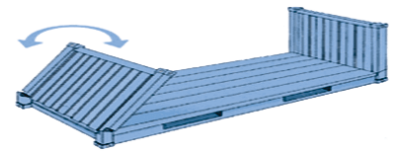
OPEN TOP

SPEC	LENGTH*	WIDTH*	HEIGHT*	DOOR WIDTH	DOOR HEIGHT	CAPACITY	TARE WEIGHT	MAXI CARGO
Open Top 20'	19' 4"	7' 7"	7' 8"	7' 6"	7' 2"	1,136 Cft	5,280 Lbs	47,620 Lbs
	5.894 m	2.311 m	2.354 m	2.286 m	2.184 m	32.23 Cu.m	2,400 Kgs	21,600 Kgs
Open Top 40'	39' 5"	7' 8"	7' 8"	7' 8"	7' 5"	2,350 Cft	8,490 Lbs	58,710 Lbs
	12.028 m	2.350 m	2.345 m	2.341 m	2.274 m	66.5 Cu.m	3,850 Kgs	26,630 Kgs



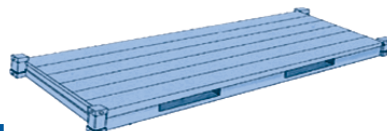
FLAT RACK

SPEC	LENGTH*	WIDTH*	HEIGHT*	DOOR WIDTH	DOOR HEIGHT	CAPACITY	TARE WEIGHT	MAXI CARGO
Flat Rack 20'	18' 5"	7' 3"	7' 4"	-	-	-	5,280 Lbs	61,117 Lbs
	5.61 m	2.228 m	2.233 m	-	-	-	2,530 Kgs	27,722 Kgs
Flat Rack 40'	39' 7"	7' 3"	7' 4"	-	-	-	12,081 Lbs	85,800 Lbs
	12.06 m	2.228 m	2.233 m	-	-	-	5,479 Kgs	38,918 Kgs



FLAT RACK COLLAPSIBLE

SPEC	LENGTH*	WIDTH*	HEIGHT*	DOOR WIDTH	DOOR HEIGHT	CAPACITY	TARE WEIGHT	MAXI CARGO
Collapsible 20'	18' 6"	7' 3"	7' 4"	-	-	-	6,061 Lbs	61,117 Lbs
	5.63 m	2.228 m	2.233 m	-	-	-	2,749 Kgs	27,722 Kgs
Collapsible 40'	39' 7"	7' 3"	7' 4"	-	-	-	12,787 Lbs	85,800 Lbs
	12.06 m	2.228 m	2.233 m	-	-	-	5,800 Kgs	38,918 Kgs



PLATFORM

SPEC	LENGTH*	WIDTH*	HEIGHT*	DOOR WIDTH	DOOR HEIGHT	CAPACITY	TARE WEIGHT	MAXI CARGO
Platform 20'	19' 11"	8' 0"	7' 4"	-	-	-	6,061 Lbs	52,896 Lbs
	6.07 m	2.43 m	2.23 m	-	-	-	2,749 Kgs	23,993 Kgs
Platform 40'	40' 0"	8' 0"	6' 5"	-	-	-	12,783 Lbs	66,397 Lbs
	12.19 m	2.43 m	1.95 m	-	-	-	5,798 Kgs	30,117 Kgs